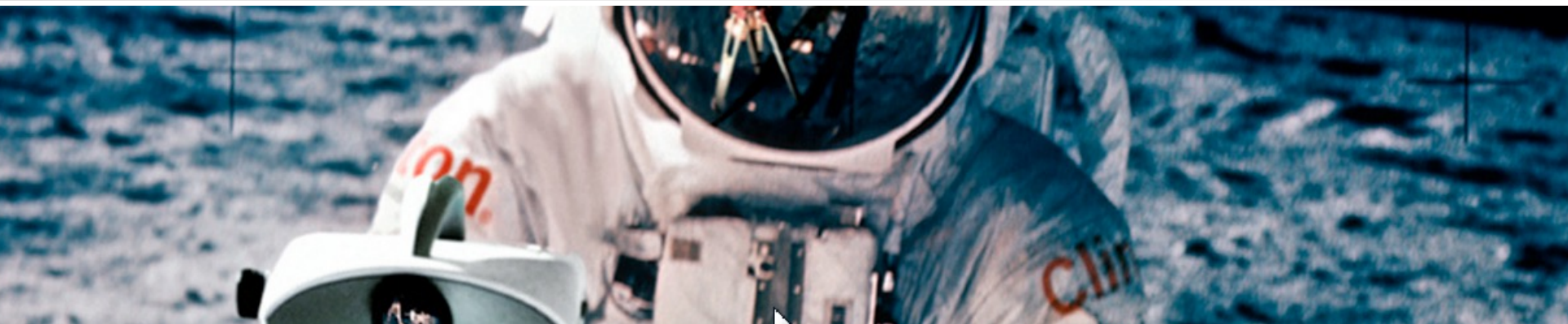
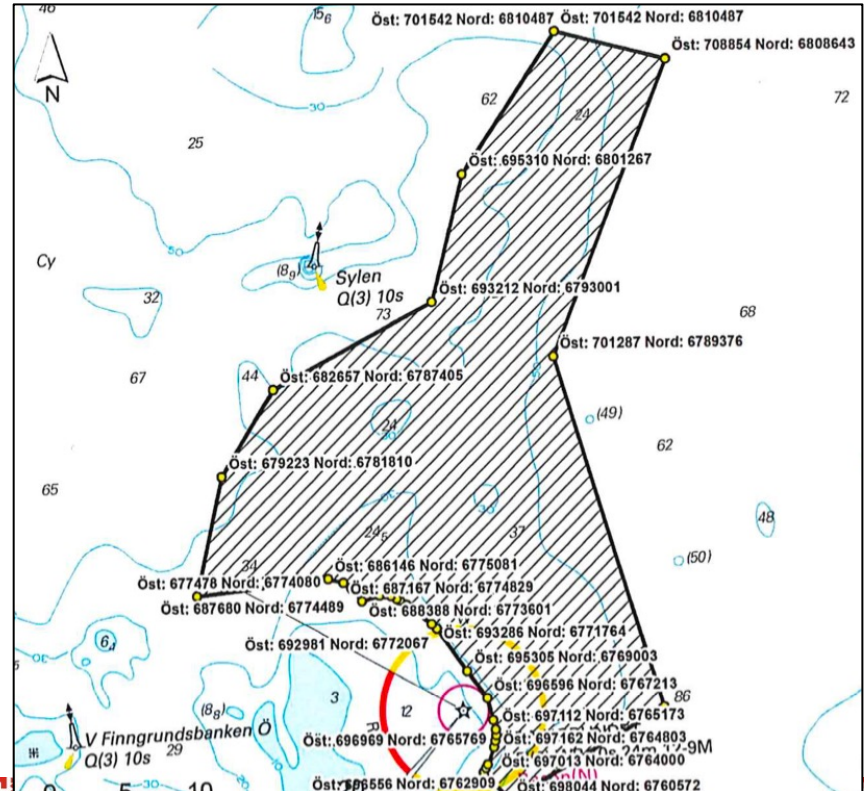
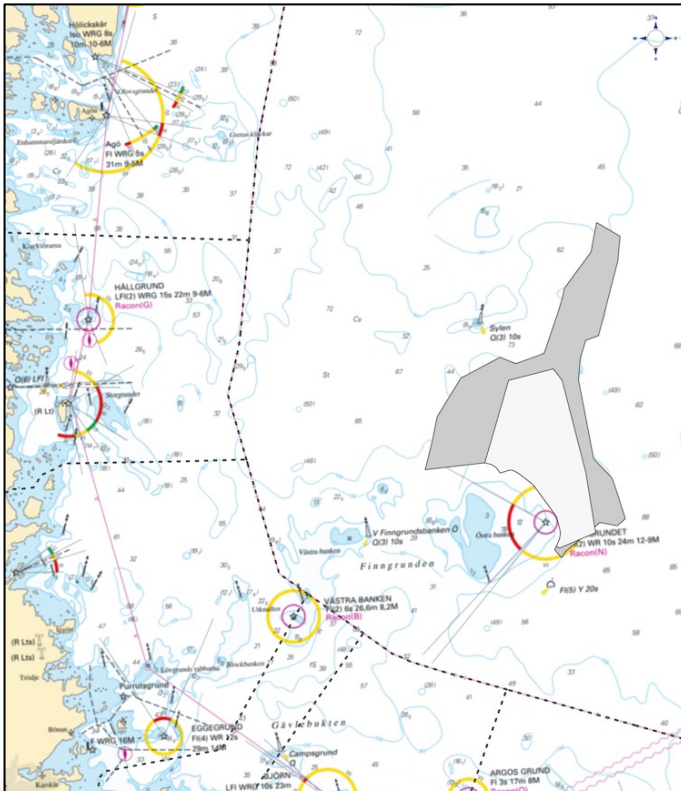


Notice to Mariners Geophysical survey, Finngründen area, Bay of Bothnia



- ❑ **VESSEL:** M/V NORTHERN WIND
- ❑ **MANEUVERABILITY:** LIMITED
- ❑ **EQUIPMENT:** MULTIBEAM & SUBBOTTOM PROFILER (HULL MOUNTED)
SOUND VELOCITY PROFILER (TOWED)
- ❑ **TIME:** 10TH OF JUNE TO 20TH OF AUGUST – 2022
- ❑ **AIM:** HYDROGRAPHIC CONDITIONS FOR A WIND FARM



MV Northern Wind

Calls sign: 2IOX2

Bridge: +46 8 558 030 39

Email: master-nw@clinton.se

Contact person at Clinton Marine Survey:

Martin Wikmar	CEO	+46 708 79 90 20
Philip Ljungström	Project Manager	+46 708 79 90 26

